

ARM MOTORIZATION FOR SWINGING GATES

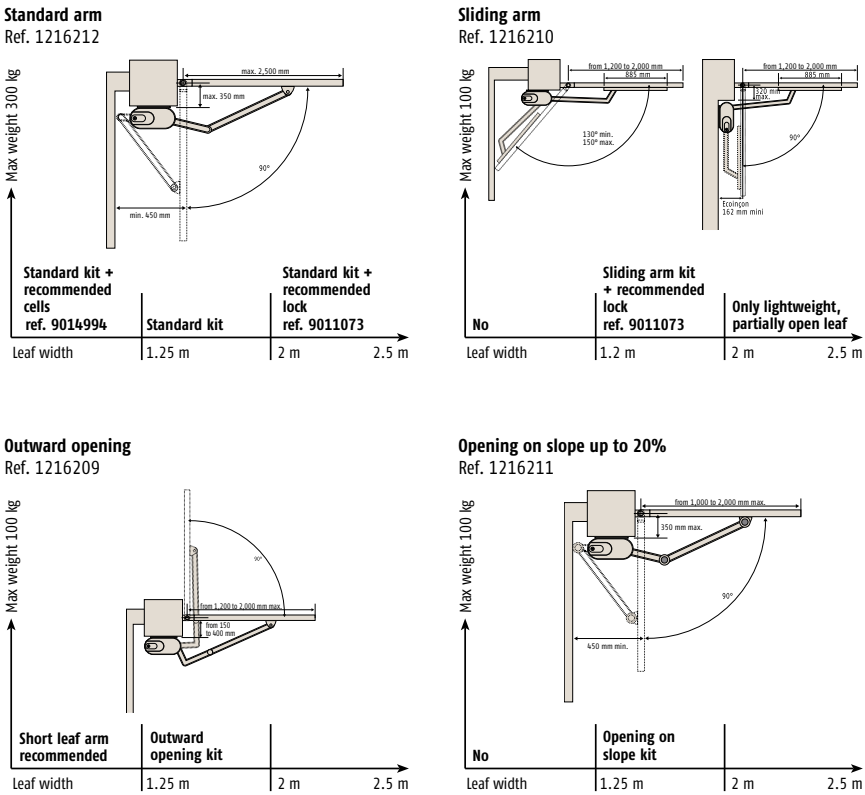
UP TO 2.5 M – 300 KG PER LEAF



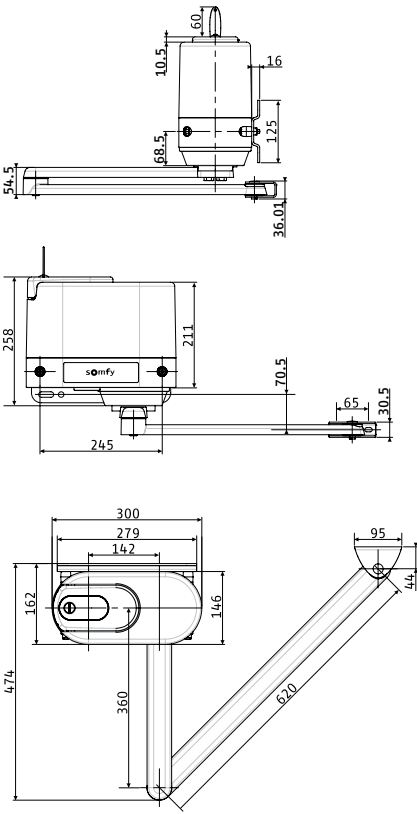
- **Fast opening** in 15 seconds to 90°, with slow speed at opening start and closing end.
- **Mechanical stoppers incorporated** into the motor.
- **Universal solution:** opening over a slope, outwards, up to 150°, for small quoin.
- **Dual cover** for increased comfort and safety:
 - > 1st cover accessible to the end-user for manual unlocking.
 - > 2nd cover for use by the installer for access to the electrical connections.

TECHNICAL CHARACTERISTICS	
Motor power supply	24 Vdc
Max. consumed power	130 W
Consumed power on standby	5.3 W
Max. number of operations/day	40
Opening time to 90° C	15 sec
Output torque	305 Nm
Motor output speed	2.4 tr/min
Operating temperature	-20°C to +60°C
RTS remote control frequency	433.42 MHz
Number of remote controls that can be memorized	32
Protection factor	IP 44

TYPE OF INSTALLATION



GENERAL OVERALL SIZE



PACKS

	Axovia Multi Pro motor	Standard arm	Steel swivel arm	Steel outside curved arm	Steel slide arm	Ax24 ^{NS} remote control box ref. 1841032	Keygo RTS 4 channels ref. 1841064	Backup battery ref. 9001001	24 V amber light ref. 9014082	Photoelectric cells ref. 9014994	Packs per pallet
Standard pack ref. 1216212	● (2x)	● (2x)	-	-	-	●	● (2x)	-	-	-	12
Sliding arm pack ref. 1216210	● (2x)	-	-	-	● (2x)	●	● (2x)	-	-	-	1
Outward opening pack ref. 1216209	● (2x)	-	-	● (2x)	-	●	● (2x)	-	-	-	1
Opening on slope pack ref. 1216211	● (2x)	-	● (2x)	-	-	●	● (2x)	-	-	-	1
Comfort pack ref. 1216230	● (2x)	● (2x)	-	-	-	●	● (2x)	●	●	●	12

Assembly kit included.

OPTIONAL ACCESSORIES

