

# Saloon40

Motorised swing turnstiles



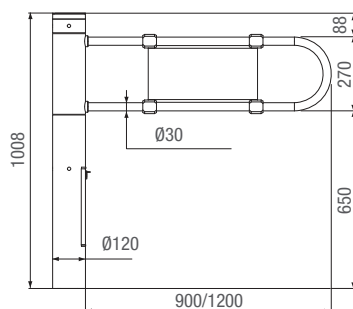
## Fast access and easy, modular and safe installation



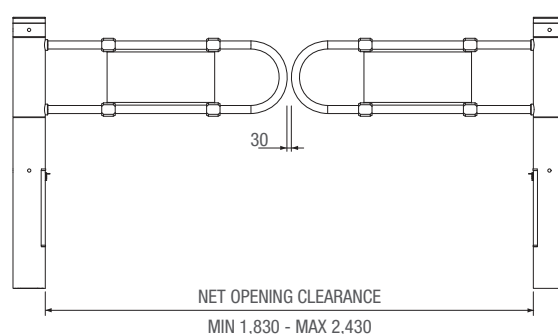
- Built-in illuminated crown, with modular assembly, warns of leaf movement and operating status.
- Small in size, the control panel, power supply and electric brake are inside the automation, in a diameter of just 120 mm.
- Opening always under control, thanks to the acoustic signal that warns of any attempt to force opening.
- Safe as it is reversible. In the event of a blackout, the automation allows manual opening for both entry and exit.
- The motor with encoder enables easy management of the slowdown and obstacle detection stages.
- The programming and function display screen is located in an easily accessible place.
- Movement activation, via transponder card, magnetic card, buttons or photocells.
- Memory Roll for saving configurations and users.
- Easy to install modular barriers, using plastic or stainless steel joints.

The speed of the leaf can be adjusted directly from the control panel.

## Dimensions (mm)



## Application (mm)



## Limits to use

MODEL	PSSLN40
Max leaf length (mm/in)	1200/ 47.24
Max leaf weight (Kg/lb)	2/4.40
Max leaf opening (°)	90








● 24 V DC

## Technical information

Type	PSSLN40
Protection rating IP	40
Power supply (V - 50/60 Hz)	230 AC
Motor power supply (V)	24 DC
Opening speed to 90° (s)	1
Power (W)	120
Operating temperature (°C/°F)	-20 ÷ +55 / -4 ÷ +131

● 24 V DC

# The full range

Code	Description	Price € (VAT not included)
<b>24 V DC motorised swing turnstile</b>		
001PSSLN40	24 V DC two-way motorised swing turnstile made from aluminium complete with control panel.	
<b>Accessories</b>		
001PSSL90	Aluminium leaf L = 900 mm / L = 35.43 in.	
001PSSL120	Aluminium leaf L = 1,200 mm / L = 47.24 in.	
001PSSLC	CUSTOMISED aluminium leaf (L = min. 600 mm L = max. 1,200 mm / L = min. 23.62 in L = max. 147.24 in).	
001PSSA01	Activation radar to be installed above the automation.	
001PSSA03	Kit featuring 2 plastic sleeves with chrome-plated finish for securing barriers.	
001PSSA04	Kit featuring 2 AISI 304 steel sleeves for securing barriers.	



## RED ILLUMINATED CROWN

Warns of leaf closing.



## GREEN ILLUMINATED CROWN

Warns of leaf opening.



## BLUE ILLUMINATED CROWN

Warns that the leaf is about to close  
(Early warning flashing time can be adjusted electronically).



## ACTIVATION RADAR

This built-in device enables the leaf to be opened in advance at a distance.