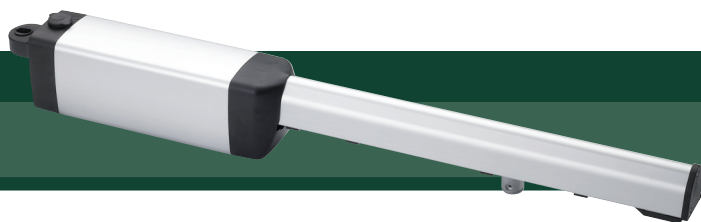


# PHOBOS SERIES

## ELECTROMECHANICAL OPERATOR FOR SWING GATES



Opens the future



CODE	DESCRIPTION	VOLTAGE	LEAF WEIGHT	LEAF LENGTH
P935066 00002	PHOBOS BT*	24 V	up to 2500 N (~250 kg)	up to 1.80 m
R935214 00003	PHOBOS BT KIT	24 V	up to 2500 N (~250 kg)	up to 1.80 m
R935243 00002	PHOBOS BT L KIT	24 V	up to 2500 N (~250 kg)	up to 5 m <sup>(with electric lock)</sup> , 3 m <sup>(without electric lock) *</sup>
P935067 00002	PHOBOS*	230 V	up to 2500 N (~250 kg)	up to 1.80 m
R935214 00002	PHOBOS KIT	230 V	up to 2500 N (~250 kg)	up to 1.80 m
P935073 00002	PHOBOS L	230 V	up to 2500 N (~250 kg)	up to 5 m <sup>(with electric lock)</sup> , 3 m <sup>(without electric lock)</sup>
P935066 00004	PHOBOS N BT	24 V	up to 2500 N (~250 kg)	up to 1,80 m
P935067 00004	PHOBOS N	230 V	up to 2500 N (~250 kg)	up to 1,80 m

\* Available while stock last

→ New compact lengthened design (PHOBOS N and PHOBOS N BT)

### • SMART TECHNOLOGY.

→ Magnetic limit switches and release, efficient even at low temperatures (PHOBOS N and PHOBOS N BT).

→ Only 18 seconds for 90° opening (PHOBOS N and PHOBOS N BT)

→ Control unit compatible with the EELink protocol.

### • SAFE USE.

→ The version powered at 24V has been specially designed for simpler and faster installation in compliance with the safety standards laid down by the Machinery Directive.

→ Thanks to the antisquashing system, the operator inverts motion and prevents damage to people and property in the event of contact (BT).

### • SIMPLER INSTALLATION.

→ BFT's system of coded limit switches makes it possible to reduce the complexity of wiring the low-voltage motors: a single wire is carried to the control panel instead of the three normally required, thereby increasing the simplicity and speed of installation. Furthermore, the system is able to automatically distinguish between the open limit switch and the closed one and hence prevent wasted time and wiring errors (PHOBOS BT and PHOBOS BT L).

→ The operator is supplied without cable to reduce the installation times (PHOBOS N and PHOBOS N BT)

	TECHNICAL FEATURES			
	PHOBOS N BT	PHOBOS BT L	PHOBOS N	PHOBOS L
CONTROL PANEL	LIBRA C MA (suggested)	LIBRA C MA (suggested)	ALTAIR P (suggested)	ALTAIR P (suggested)
REVERSIBLE/IRREVERSIBLE OPERATOR	irreversible	irreversible	irreversible	irreversible
POWER SUPPLY	230V~ ± 10%, 50 Hz single-phase	230V~ ± 10%, 50 Hz single-phase	230V~ ± 10%, 50 Hz single-phase	230V~ ± 10%, 50 Hz single-phase
ABSORBED POWER	40 W	40 W	210 W	210 W
THERMAL PROTECTION	integrated in the control unit	integrated in the control unit	integrated	integrated
ROD WORKING STROKE	305 mm	410 mm	305 mm	458 mm
ROD SPEED	20 mm/s	15 mm/s	20 mm/s	13 mm/sec
OPENING OR CLOSING TIME	18 s	-	18 s	-
IMPACT REACTION	torque limiter integrated in the control panel	torque limiter integrated in the control panel	electronic clutch on control panel	electronic clutch on control panel
TYPE OF LOCK	mechanical on opening/closing	mechanical on opening/closing	mechanical on opening/closing	mechanical on opening/closing
MANUAL RELEASE	release key	release key	release key	release key
OPERATING CYCLE	very intensive use	very intensive use	semi intensive use	semi intensive use
ENVIRONMENTAL CONDITIONS	from -20°C to + 50°C	from -10°C to + 50°C	from -20°C to + 50°C	from -10°C to + 50°C
DEGREE OF PROTECTION	IPX4	IPX4	IPX4	IPX4
OPERATOR WEIGHT	50 N (~5 kg)	65 N (~6,5 kg)	50 N (~5 kg)	77 N (~7,7 kg)
DIMENSIONS	see drawing	-	-	-

## RESIDENTIAL USE

### ACCESSORIES



#### D113672 00005 - LIBRA C MA

- Universal control panel for one or two 24V motors with limit switch with 1 or 2 wires.
- Easy to wire also for centralised connections, thanks to extractable terminals, and the AUTODIAGNOSIS function.
- Safety thanks to electronic antisquashing control with amperometric detection.
- Complete with incorporated two-channel receiver, ready for serial management, back-up battery and electric lock.
- Total control of programming by digital display and three simple buttons.
- Easy setting using the AUTOSET function which allows automatic setting of the operating parameters.



#### P125005 - BT BAT

Thanks to the back-up batteries and battery charger, the BT BAT kit guarantees low voltage operation of the leaf in the event of power failure. For PHOBOS BT, PHOBOS BT L, IGEA LB BT, IGEA BT and ELI 2250 models.



#### P135004 - CPH

Rod cover for PHOBOS and PHOBOS BT models.



#### N733286 - SFR

Adjustable back fixing bracket for PHOBOS / PHOBOS BT.



#### N733347 - SFR L

Adjustable back fixing bracket for PHOBOS L / PHOBOS BT L.



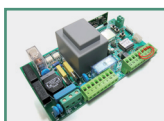
#### D730567 - PPE

Anchor plate used to weld PHOBOS model brackets



#### P123001 00001 - EBP

230 Vac electric lock with zero stop resistance. Also available in 50 mm, 75 mm versions and at 24V.



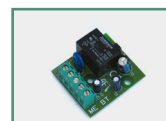
#### D113703 00002 - ALTAIR P

- Universal control panel for one or two motors up to 230V/0.5 HP of the electromechanical swing type.
- Easy wiring also for centralized connections, thanks to the extractable terminal blocks and the AUTODIAGNOSTICS function.
- Security thanks to motor torque control, regulation of the working time for pedestrians and locked shut maintenance.
- Complete with incorporated 2-channel receiver and input for pedestrian opening.
- Total control of programming by digital display.
- Easy setting by means of three simple buttons for programming logic and parameters. Easy to use on pre-existing systems thanks to total compatibility with ALTAIR.



#### D121017 - ECB SX

Left-hand horizontal electric lock. Also available in right-hand and vertical versions.



#### D111761 - ME BT

24 Vac electric lock board for BT operators.



#### D111013 - ME

12 Vac electric lock board for ALCOR N model and ALPHA SD model.



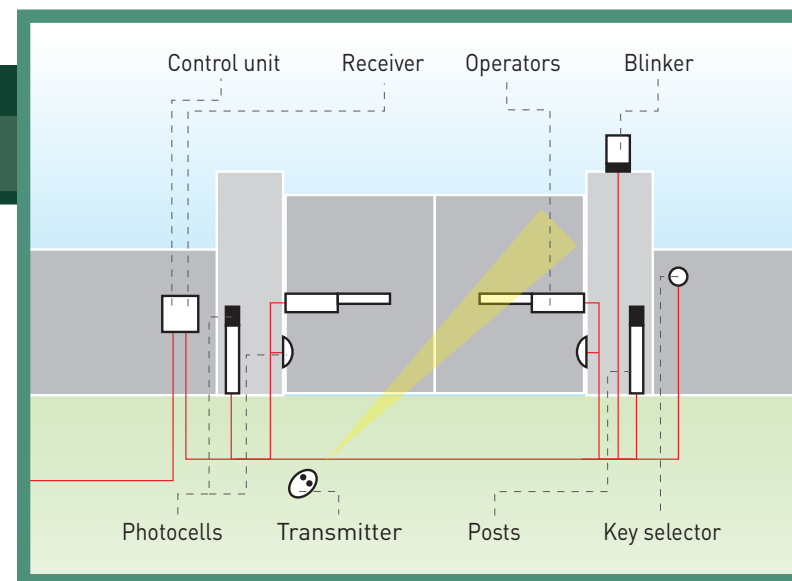
#### D610180 - CLS

Release key for LUX B, ORO, SUB, PHOBOS N and PHOBOS N BT models (10-piece pack).



#### P111376 - SCS 1

Serial connection board for QSC D MA, RIGEL 5 and ALTAIR P.



### DIMENSIONS

