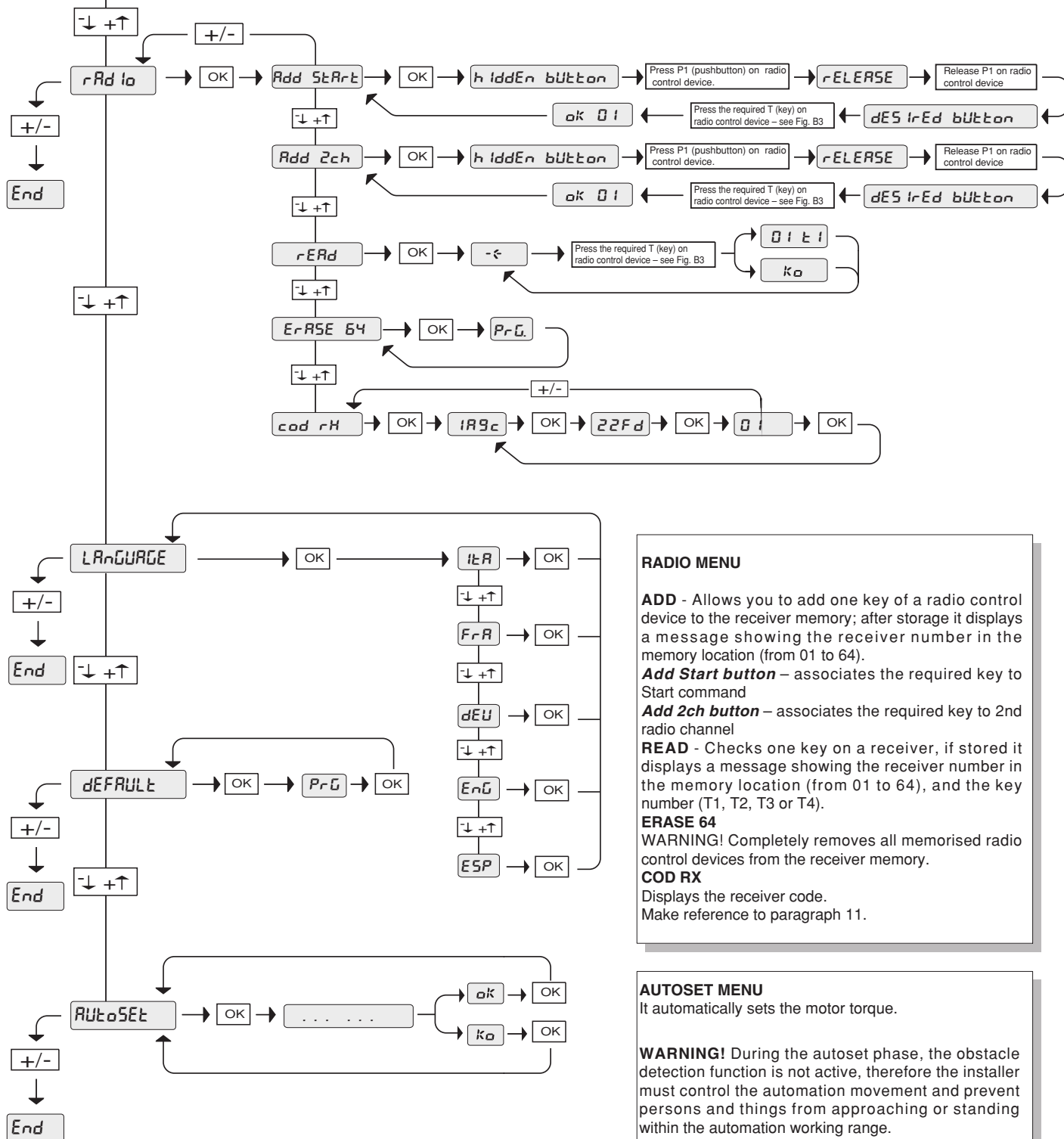
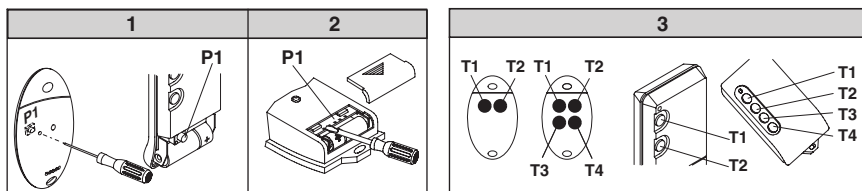


Fig. B

PRECEDING MENUS  
FIG. A



#### RADIO MENU

**ADD** - Allows you to add one key of a radio control device to the receiver memory; after storage it displays a message showing the receiver number in the memory location (from 01 to 64).

**Add Start button** – associates the required key to Start command

**Add 2ch button** – associates the required key to 2nd radio channel

**READ** - Checks one key on a receiver, if stored it displays a message showing the receiver number in the memory location (from 01 to 64), and the key number (T1, T2, T3 or T4).

#### ERASE 64

**WARNING!** Completely removes all memorised radio control devices from the receiver memory.

#### COD RX

Displays the receiver code.  
Make reference to paragraph 11.

#### AUTOSET MENU

It automatically sets the motor torque.

**WARNING!** During the autaset phase, the obstacle detection function is not active, therefore the installer must control the automation movement and prevent persons and things from approaching or standing within the automation working range.